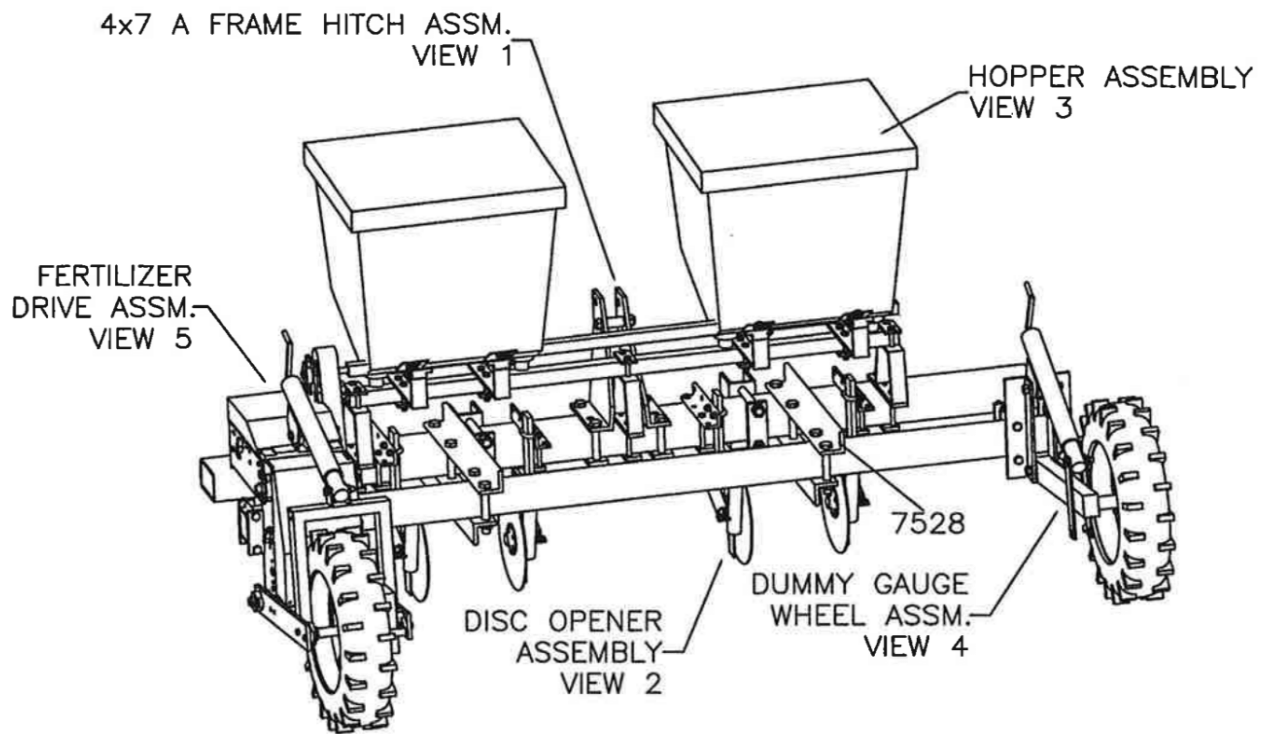


# OE-84 & OE-85 Fertilizer Attachment



# MECHANICAL TRANSPLANTER OE-84 & OE-85 FERTILIZER ATTACHMENT

## PART#    DESCRIPTION

386P	Shaft pin clip
1000BJD	Bearing for 1000JD
1000HC	Disc hub cap
1000JD	Disc with hub
1931	20 Tooth drive sprocket
4731	Bolt with handle for chain guard
5010	Hub Assembly for OE-90 drive wheel
5011	1-1/4" Flange block bearing
5012	Drive wheel chain
5014	50 Tooth drive sprocket
5015	Main drive wheel frame
5016	Drive wheel chain guard
5017	Chain tightener arm
5020	1" Flange block bearing
5021	Large chain guard
5073	Front toolbar mounting plates
5075	Rubber spacer
5078	Six sprocket cluster
5081	Three sprocket cluster
5083	Main frame
5084L	Lower drive shaft
5086	Upper drive shaft
5086F	Upper fertilizer drive shaft
5088	Chain tightener bracket
5089	2" Roller for chain tightener
5090	7 Coil chain tightener spring
5111	Transtorque bushing
5124	2-1/2" Roller for chain tightener
5209	Fender securing plate
5210	Fender
5211	Fender mounting bracket
7401	Disc opener assembly complete (left)
7402	Disc opener assembly complete (right)
7403	Drop tube assembly (left)
7404	Drop tube assembly (right)
7405	Disc to toolbar bracket (left)
7406	Disc to toolbar bracket (right)
7407	Disc scraper (left)
7408	Disc scraper (right)
7410	Flat mounting plate
7421	Toolbar support upright
7422	Small toolbar mounting plate
7423	2" Toolbar - 3 foot
7423L	2" Toolbar - 6 foot
7425	21" Hose from hopper
7427	Square drive shaft assembly
7470	OE 83 right angle iron
7471	OE 83 left angle iron
7472	OE 83 crank jack
7474	OE 83 hub arm
7475	OE 83 hub complete with bearings
7476	OE 83 bearings and seal for hub
7481	OE 83 5.90x15" tire
7482	OE 83 5.90x15" traction tire
7483	OE 83 wheel rim

## PART#    DESCRIPTION

7490	Tension spring
7491	5/16x3" eyebolt
7492	1/2" Metal bearing
7500	Hopper
7501	Auger for hopper
7502	Auger drive shaft
7503	Auger shield
7504	7/8" Flange block bearing
7505	Hopper cradle bracket
7506	U-shaped hopper bracket
7507	Hopper cradle bracket
7508	Spacer
7509	25 Tooth sprocket
7510	Top 3 gear cluster
7511	16 Tooth sprocket
7512	40 Tooth sprocket
7513	Side plates
7514	Vertical plates
7515	Top guard
7516	Side guard
7517	Side guard bracket
7518	Top shaft
7519	Spacer
7520	Chain tightener bracket
7522	Lower horizontal drive wheel chain
7523	Long vertical chain
7524	Short vertical chain
7526	Bungee assembly
7528	Large angle irons
47000	Right center upright
47001	Left center upright
47002	Securing plate for upright
47005	Pipe spacer
47006	Hitch pin bracker
47007	Hitch pin
47008	4x7 A-frame side mounting plate
47009	Top plate
FC209	3/4x1" Carriage bolt
FH111	1/4x1-1/4" Hex head cap screw
FH117	1/4x2" Hex head cap screw
FH121	1/4x2-1/2" Hex head cap screw
FH151	5/16x1/2" Hex head cap screw
FH163	5/16x1-1/2" Hex head cap screw
FH209	3/8x1" Hex head cap screw
FH221	3/8x2-1/2" Hex head cap screw
FH337	1/2x1-3/4" Hex head cap screw
FH347	1/2x3" Hex head cap screw
FH351	1/2x3-1/2" Hex head cap screw
FH355	1/2x4" Hex head cap screw
FH357	1/2x4-1/2" Hex head cap screw
FH521	5/8x3-1/2" Hex head cap screw
FH467	5/8x6-1/2" Hex head cap screw
FH525	3/4x4" Hex head cap screw
FH573	7/8x4-1/2" Hex head cap screw
FH581	7/8x6-1/2" Hex head cap screw



1395 US 17 South  
Elizabeth City, NC 27909  
Phone:(252)264-2400

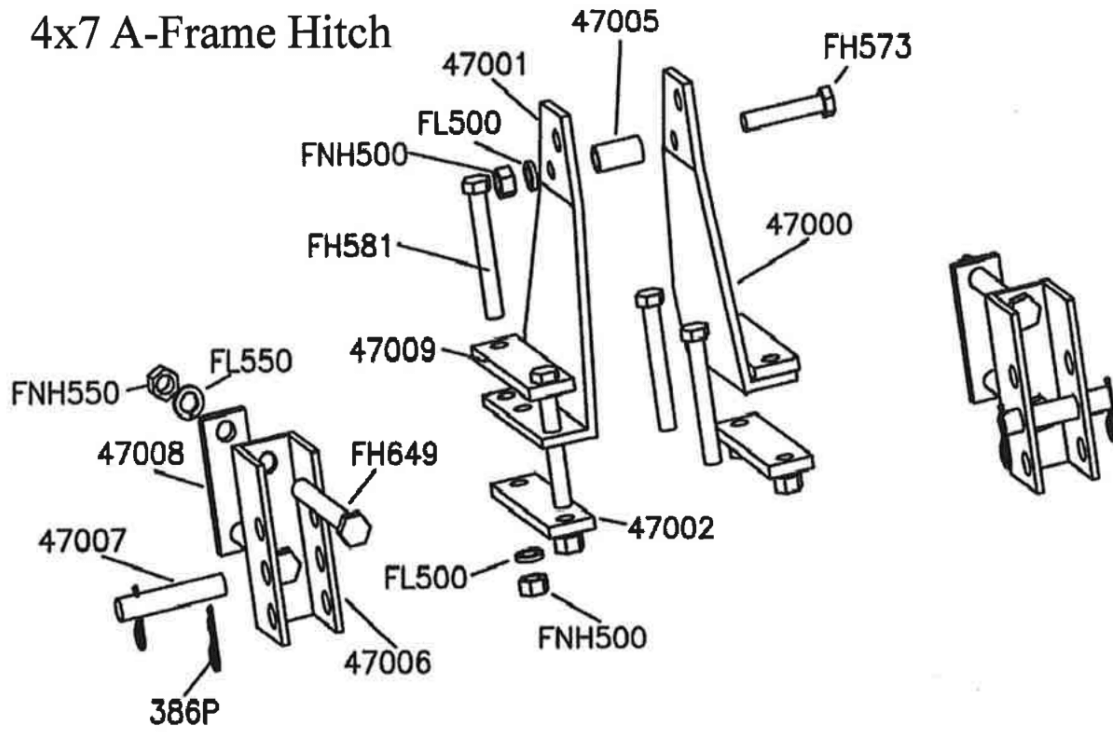
147 Hwy 32 North  
Sunbury, NC 27979  
Phone:(252)465-8614

5038 Old Raleigh Road  
Wilson, NC 27893  
Phone:(252)237-0006

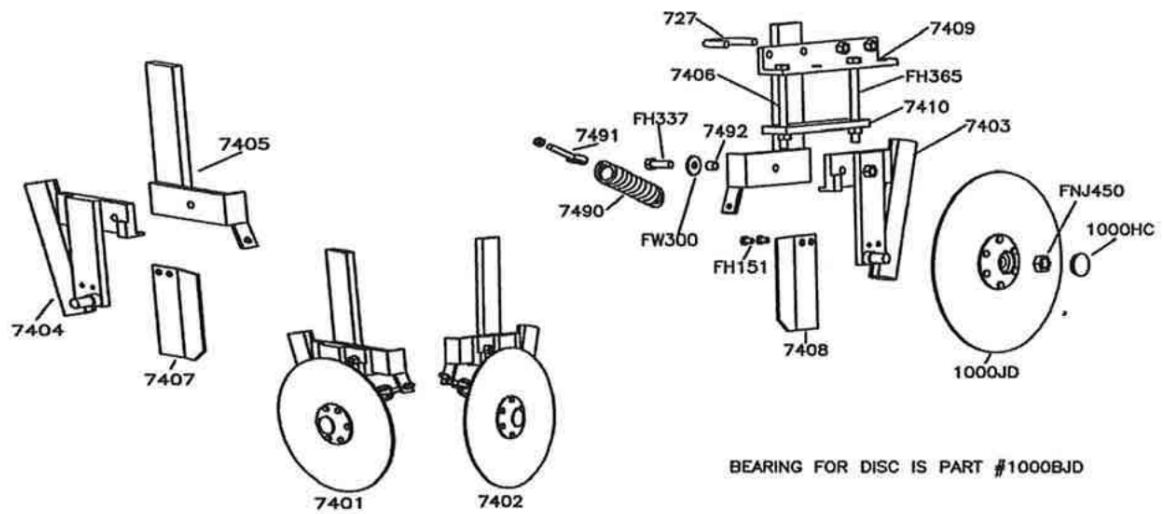
[www.bandsent.com](http://www.bandsent.com)



## View 1 4x7 A-Frame Hitch

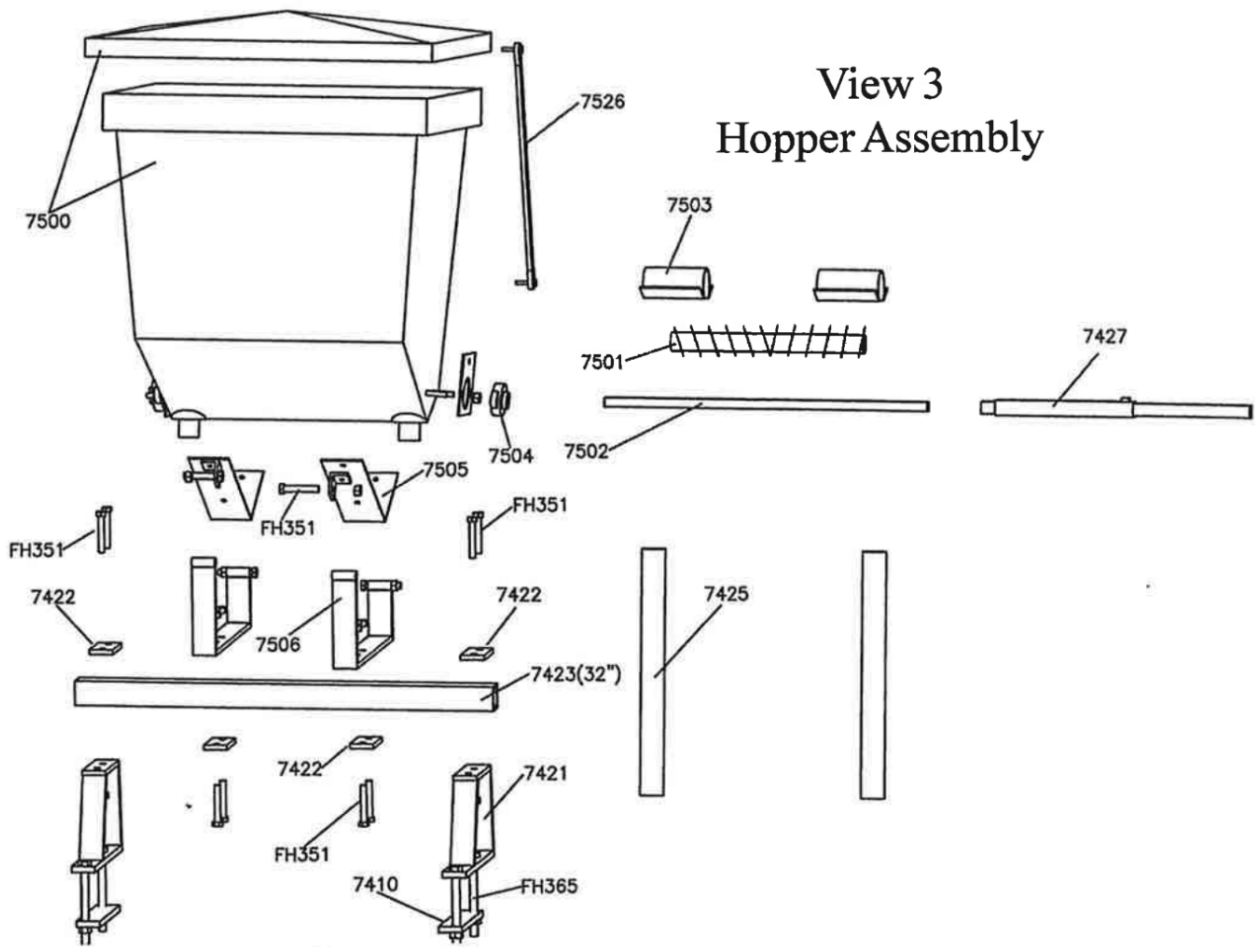


## View 2 Disc Openers

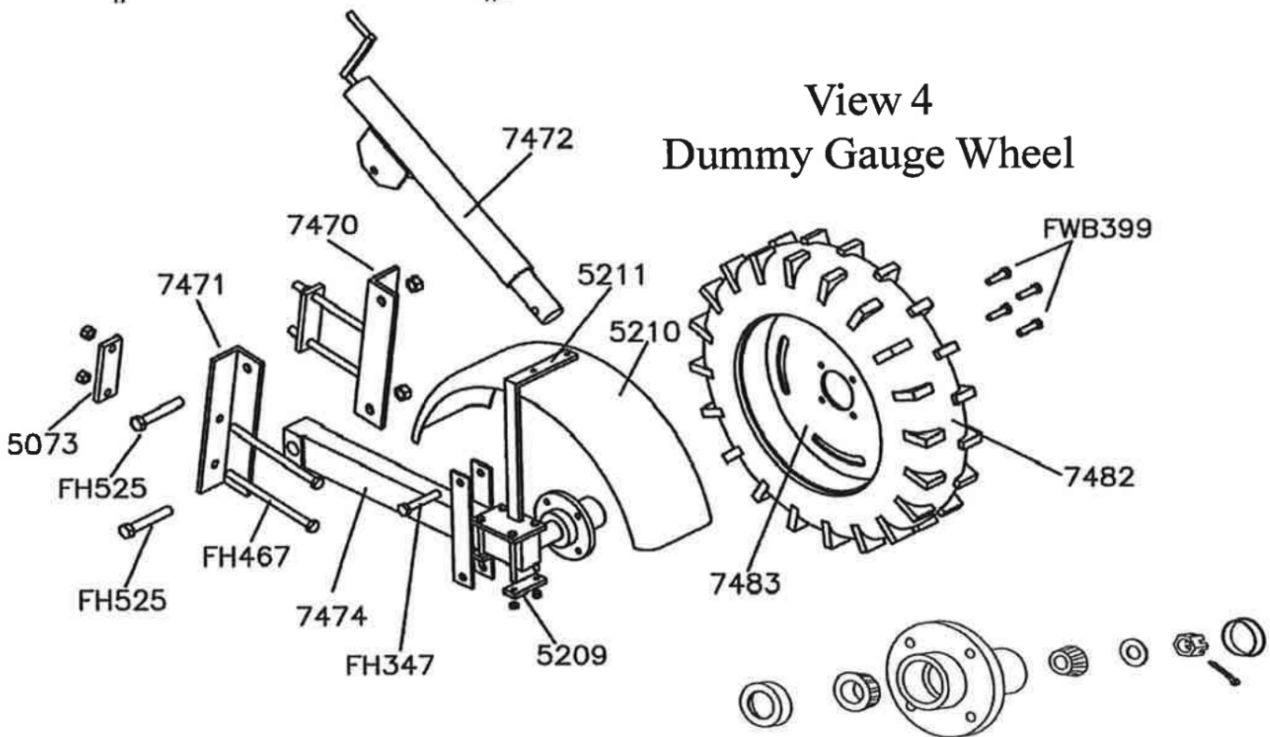


BEARING FOR DISC IS PART #1000BJD

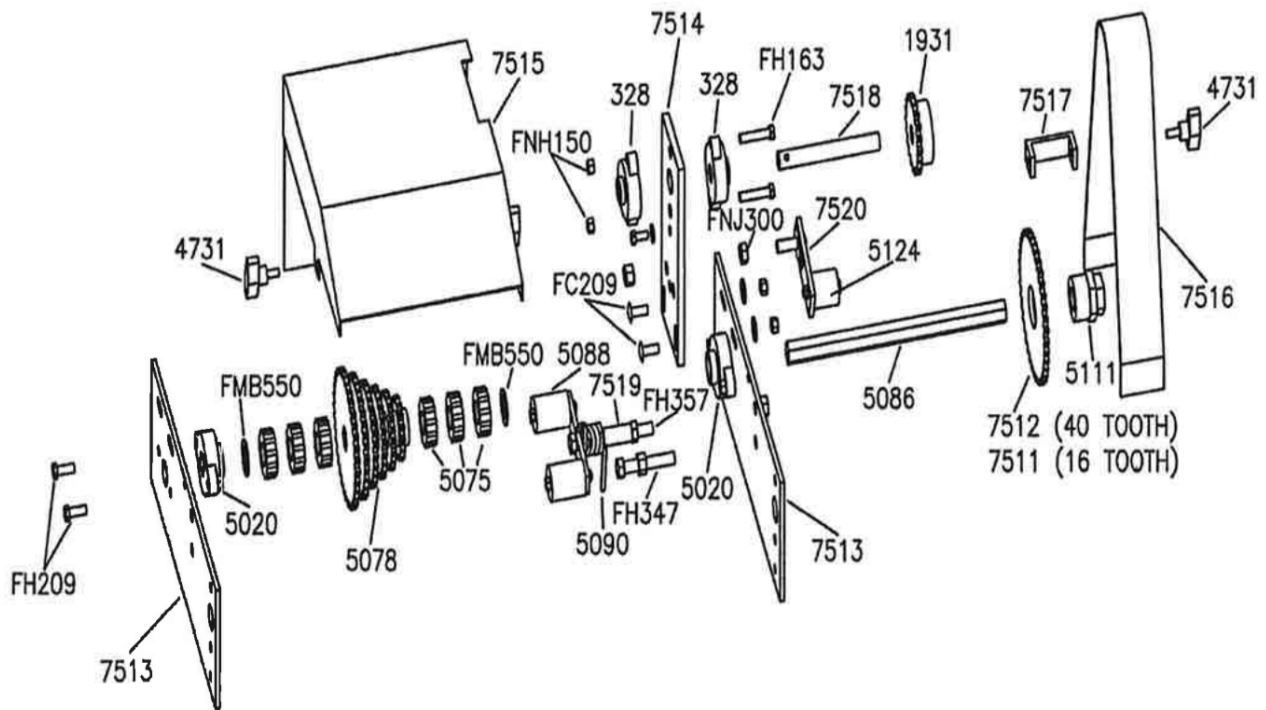
### View 3 Hopper Assembly



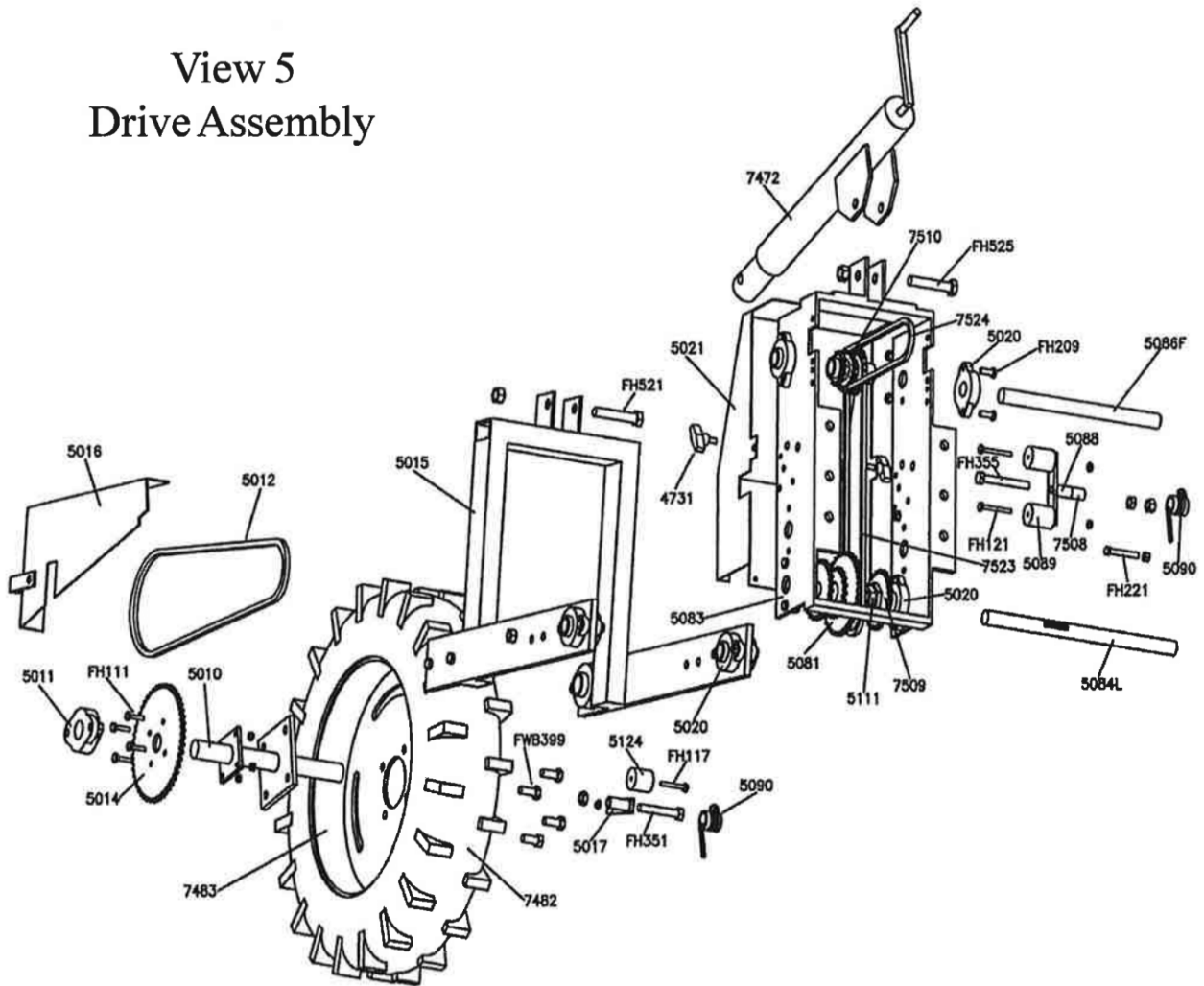
### View 4 Dummy Gauge Wheel



COMPLETE HUB ASSEMBLY - PART #7475  
BEARINGS AND SEALS - PART #7476

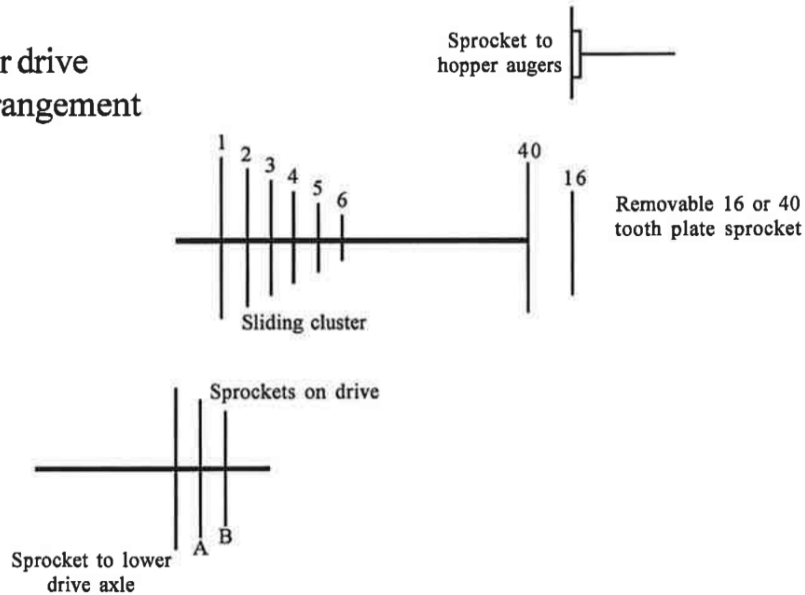


View 5  
Drive Assembly



# Rate chart for OE 84 & OE 85 Fertilizer Attachment

## Fertilizer drive sprocket arrangement



Sprocket setup	48" Rows	42" Rows	40" Rows	36" Rows
A1-16	208	238	250	278
B1-16	180	206	217	241
A2-16	227	259	273	303
B2-16	198	226	238	264
A3-16	260	297	313	347
B3-16	236	270	284	315
A4-16	299	342	260	400
B4-16	266	304	320	355
A5-16	349	400	421	467
B5-16	322	369	388	431
A6-16	435	498	524	582
B6-16	394	451	475	527
A1-40	502	575	605	672
B1-40	444	508	535	594
A2-40	573	656	690	766
B2-40	490	561	590	655
A3-40	602	689	725	805
B3-40	519	594	625	694
A4-40	730	836	880	977
B4-40	643	736	775	860
A5-40	877	1004	1057	1173
B5-40	776	888	935	1038
A6-40	1094	1252	1318	1463
B6-40	955	1093	1150	1277

Fertilizers have many weight variations. Since the fertilizer attachment measures volume, not weight, there can be as much as 100% variation from the weight chart calculations.

To check the exact number of pounds of fertilizer that will be delivered for 40 inch row spacing, proceed as follows:

Run both output tubes from the fertilizer hopper and attach a sack, or other suitable container under the opening in the hopper. Engage the fertilizer attachment and drive forward 100 feet. Weigh the amount of fertilizer caught in the container and multiply that amount by 100 (see factors below). The result will be the number of pounds of fertilizer delivered per acre.

Factors for converting:

36" rows, multiply by 1.11

42" rows, multiply by .95

48" rows, multiply by .83

Keep fertilizer in a dry place. Most fertilizers readily accumulate moisture and cause metal to corrode.

Corrosion shortens metal life because of binding or "freezing." Deposits of fertilizer will build up in the hopper and interfere with working parts. The hoppers should be cleaned after every use.